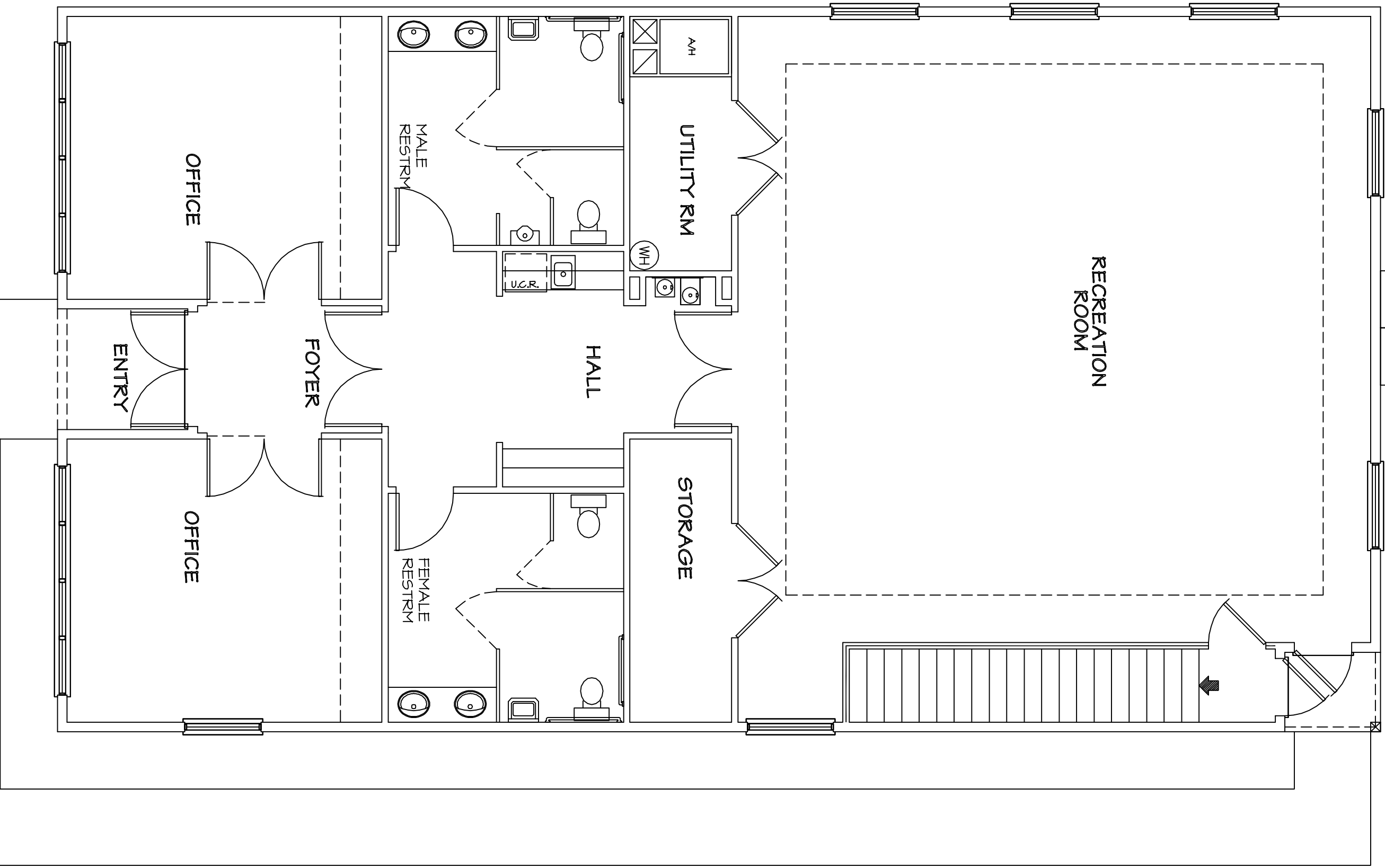
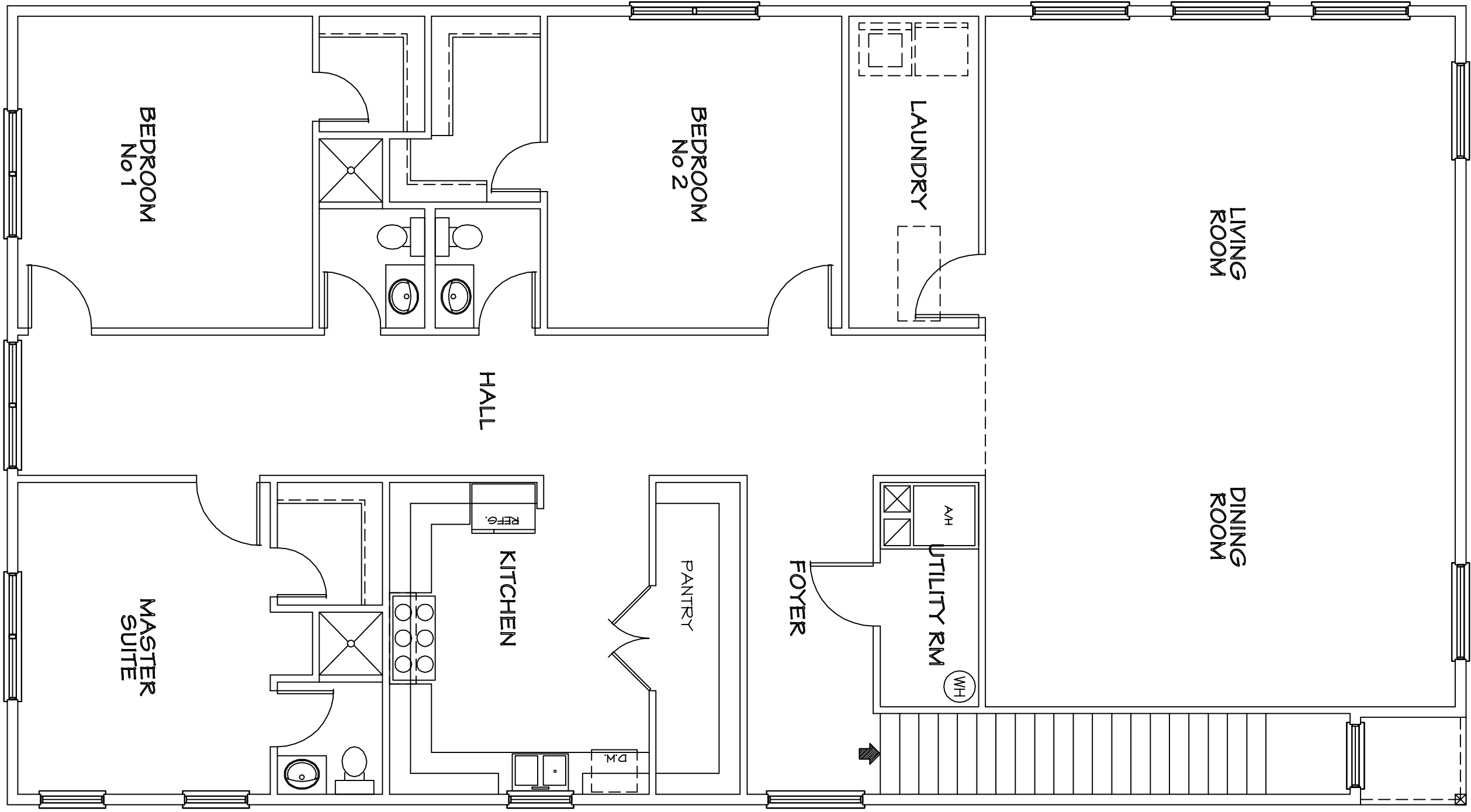


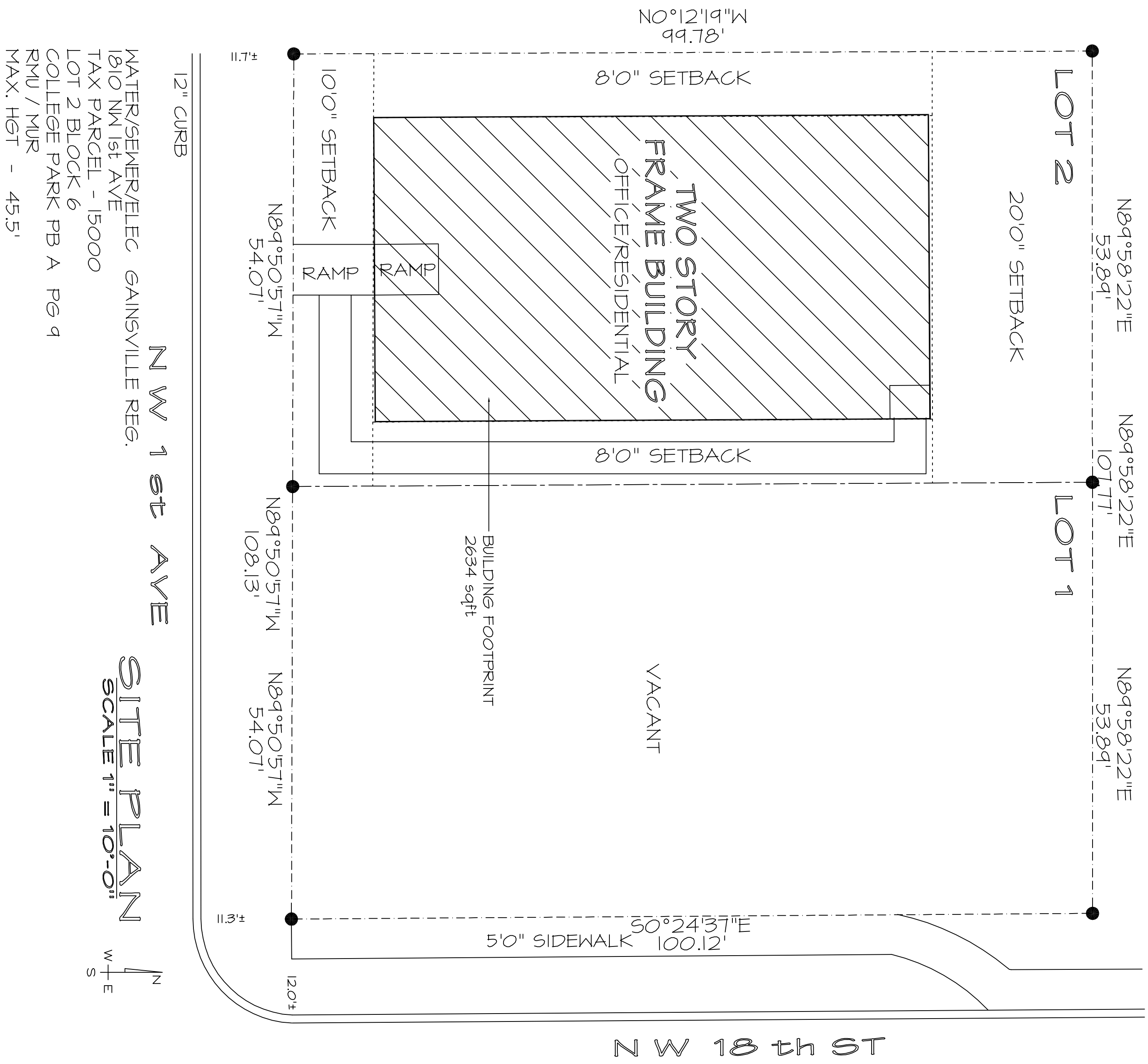
FRONT ELEVATION



1st FLR FLOOR PLAN
OFFICE

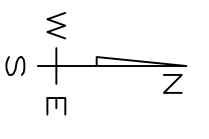


2nd FLR FLOOR PLAN
RESIDENTIAL



WATER/SEWER/ELEC GAINSVILLE REG.
1810 NW 1st AVE
TAX PARCEL - 15000
LOT 2 BLOCK 6
COLLEGE PARK PB A PG 9
RMU / MUR
MAX. HGT - 45.5'

SITE PLAN
SCALE 1" = 10'-0"



CHRISTIAN CAMPUS HOUSE BUILDING
1810 NW 1st AVE
GAINSVILLE FL.
LOT 2 BLOCK 6 COLLEGE PARK PB A PG 9

DATE	Revisions
12-28-2010	
1-17-2011	
2-3-2011	
2-13-2011	
4-4-2011	

NOTE:
IT IS THE RESPONSIBILITY OF THE CONTRACTOR TO VERIFY ALL CONSTRUCTION DRAWINGS PRIOR TO COMMENCING CONSTRUCTION.
I HEREBY CERTIFY THAT THE CONSTRUCTION PLANS CONTAINED HEREON ARE IN COMPLIANCE WITH THE 2001 EDITION OF THE FLORIDA BUILDING CODE.

THOMAS H. HILLIFORD ARCHITECT
FLORIDA REG # 4900
P.O. BOX 236 / HOLDER FLORIDA 34445 / 352-476-1937

DATE

Gregory Fengarinas and Associates Inc.
7129 W. Crestview Lane
Crystal River, Fla. 34424
Phone - 352-564-8160
FENASSC@INFIONLINE.NET

Thomas H. Williford Architect
FLORIDA REG # 4900
PO Box # 236
Holder, Fla. 3445
Phone - 352-476-1937

PROJECT NO.
11-600

SHEET
COVER SHEET